



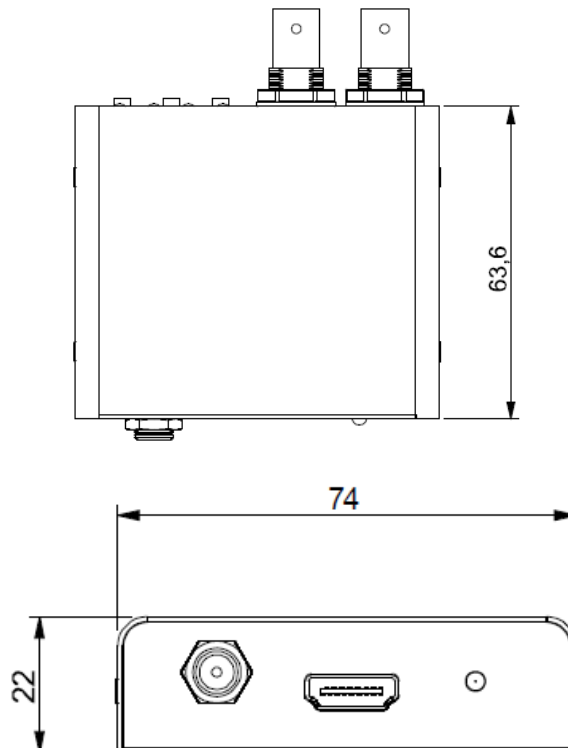
## HDMI to SDI Converter NP-HD2SDI Specifications

NP-HD2SDI is a simple converter which can convert HDMI signal to 3G/HD/SD-SDI signal. Up/Down convert functions are installed. 1 HDMI input signal can be distributed to 2 SDI output signal.

### ■ Specifications

Model	NP-HD2SDI
Input	1 Input HDMI (Type-A)
Input resolutions	HDTV:1080p@ 50 / 59.94 / 60, 1080i@ 50 / 59.94 / 60, 1080p@ 23.97 / 24 / 25 / 29.97 / 30, 720p@ 50 / 59.94 / 60, 525i, 625i VESA:VGA(640x480),VGA(800x600),XGA(1024x768),WXGA(1280x768),WXGA(1280x800), Quad-VGA(1280x960), SXGA(1280x1024),WXGA(1360x768), WXGA(1366x768),SXGA+(1400x1050),WXGA+(1440x900),WXGA++(1600x900),UXGA(1600x1200),WSXGA+(1680x1050),WUXGA(1920x1200)
Output	2 Outputs: SD/HD/3G-SDI
Output Resolutions	<ul style="list-style-type: none"> <li>● 3G format               <ul style="list-style-type: none"> <li>➢ 1080p50/59.94/60</li> </ul> </li> <li>● HD format               <ul style="list-style-type: none"> <li>➢ 1080p 23.97/24/25/29.97/30</li> <li>➢ 1080i50/59.94/60</li> <li>➢ 720p50/59.94/60</li> </ul> </li> <li>● SD format               <ul style="list-style-type: none"> <li>➢ 625i (PAL)</li> <li>➢ 525i (NTSC)</li> </ul> </li> </ul>
Audio Format	Embedded Audio (2 ch, 24 bit, 48 kHz) ※SDI Embedded Audio Channel 1-2
Plug & Play	Yes
Dimensions	74 (W) x 63.6 (D) x 22 (H) mm (Without projections)
Weight	170 g
Temperature	Operation: 0 to 50 degrees C, Storage: -20 to +60 degrees C
Humidity	Operation/Storage: 20 to 90 % (Without condensing)
Power Consumptions	4.92W (12V, 410mA)
Accessories	DC power adapter with locking mechanism x 1

### ■ Outside Design



●Design and specifications may change without notice for further improvement. ●Attached DC adapter is designed for this product and shall not be used with other devices.